




Portable capacity 


2

Medium capacity 


5

Large capacity 

9

Jump Starter 

16

Car Accessories 

20



Angel Eye

Portable Power Bank

SPECIFICATIONS

- Cell type: Lithium-ion
- Capacity: 2000mAh to 2600mAh
- Input: DC 5V/ 1A
- Output: DC 5V/ 1A
- Size: 90x32.5x21mm
- Net weight: 75g

FEATURES

- Battery capacity: 2200mAh to 2600mAh
- Charge cycles: 500 cycles after the power is still up to 85%
- When charging other device by the portable battery pack, the GREEN Led will light up.
- When charging the portable battery itself, the RED Led flashes and when it's charged in full, the RED Led is lit up constantly.





Rainbow

Portable Power Bank

SPECIFICATIONS

- Cell type: Lithium-ion
- Capacity: 2000mAh to 2600mAh
- Input: DC 5V/ 1A
- Output: DC 5V/ 1A
- Size: 86x27x25mm
- Net weight: 65g

FEATURES

- Battery capacity: 2200mAh to 2600mAh
- Charge cycles: 500 cycles after the power is still up to 85%
- When charging other device by the portable battery pack, the GREEN Led will light up.
- When charging the portable battery itself, the RED Led flashes and when it's charged in full, the RED Led is lit up constantly.





Pocket

Portable Power Bank

SPECIFICATIONS

- Cell type: Lithium polymer
- Capacity: 3000mAh
- Input: DC 5V/ 1.5A
- Output: DC 5V/ 1A
- Size: 93.4x57x12mm
- Net weight: 75g

FEATURES

- Battery capacity: 3000mAh
- Charge cycles: 500 cycles after the power is still up to 85%
- When your device is being charged, the LED will flash. When charging the Power bank, the LED will be lit up one by one. When charging is complete, the LED will be on constantly.





Blade

Portable Power Bank

SPECIFICATIONS

- Cell type: Lithium polymer
- Capacity: 4000mAh
- Input: DC 5V/ 1A
- Output: DC 5V/ 1A
- Size: 118×64×8mm
- Net weight: 100g

FEATURES

- Battery capacity: 4000mAh
- Charge cycles: 500 cycles after the power is still up to 85%
- When your device is being charged, the LED will flash. When charging the Power bank, the LED will be lit up one by one.
- When charging is complete, the LED will be on constantly.





Executive Pro

Portable Power Bank

SPECIFICATIONS

- Cell type: Lithium-ion
- Capacity: 4000mAh to 5200mAh
- Input: DC 5V/ 2A
- Output: DC 5V/ 2.1A
- Size: 96x42x23.5mm
- Net weight: 150g

FEATURES

- Battery capacity: 4000mAh to 5200mAh
- Charge cycles: 500 cycles after the power is still up to 85%
- When your device is being charged, the LED will flash. When charging the Power bank, the LED will be lit up one by one. When charging is complete, the LED will be on constantly.





Domino

Portable Power Bank

SPECIFICATIONS

- Cell type: Lithium-ion
- Capacity: 4000mAh to 5200mAh
- Input: DC 5V/ 2A
- Output: DC 5V/ 2.1A
- Size: 115x40x22mm
- Net weight: 130g

FEATURES

- Battery capacity: 4000mAh to 5200mAh
- Charge cycles: 500 cycles after the power is still up to 85%
- When your device is being charged, the Power bank button lights will flash. When charging the Power bank, the button lights will illuminate sequentially. When charging is complete, the lights will illuminate constantly.





Powerglide

Mfi Certified

SPECIFICATIONS

- Cell type: Lithium polymer
- Capacity: 6000mAh
- Input 1: USB 5V~1A/2.1A
- Input 2: Micro USB 5V~1A/2.1A
- Output 1: Lightning 5V~1A
- Output 2: USB 5V~2.1A
- Size: 128×67×14.5mm
- Net weight: 180g

FEATURES

- Built-in Lightning cable and input-USB cable .
- Slider design of top case.can hide charging cables when not use
- Mfi Certified
- UV Coating in ultimate sense of touch
- Stainless Steel Band



Error-free plug





Tank

Portable Power Bank

SPECIFICATIONS

- Cell type: Lithium-ion
- Capacity: 6000mAh to 9000mAh
- Input: DC 5V/ 2A
- Output 1: DC 5V/ 1A
- Output 2: DC 5V/ 2A
- Size: 92×62×23mm
- Net weight: 170g

FEATURES

- Battery capacity: 6000mAh to 9000mAh
- Charge cycles: 500 cycles after the power is still up to 85%
- When your device is being charged, the Power bank button lights will flash. When charging the Power bank, the button lights will illuminate sequentially. When charging is complete, the lights will illuminate constantly.



Large capacity



Charge your devices anywhere !

Tank Mini

Portable Power Bank

SPECIFICATIONS

- Cell type: Lithium-ion
- Capacity: 10000mAh
- Input: DC 5V/ 2A
- Output 1: DC 5V/1A
- Output 2: DC 5V/2.1A, 9V/2A, 12V/1.5A
- Size: 107x61x22mm

FEATURES

- Ergonomic patented design, aluminum shell with 220 fine sand-sprayed finish, looks very high and glossy.
- There is backlight board underneath the acrylic strap which can illuminating the logo engraved on it, looks fantastic.





Superior

Mfi Certified

SPECIFICATIONS

- Cell type: Lithium polymer
- Capacity: 10000mAh
- Input: 5V~1A/2.1A
- Output 1: Lightning 5V~1A
- Output 2: USB 5V~2.1A
- Size: 136×72×14mm
- Net weight: 206g

FEATURES

- Integrated Lightning Cable
- UV Coating, Ultimate sense of touch.
- One-take USB port
- Mfi Certified



Error-free plug





Mosaic

Portable Power Bank



SPECIFICATIONS

- Capacity: 10000mAh
- Input: 5V~1A/2.1A
- Output 1: 5V~1A
- Output 2: 5V~2.1A
- Size: 148×78×10.9mm
- Net Weight: 202g

FEATURES

- One –Take USB port.
- Thin Enough, Non-slip surface fine lines ,Great feel in your palm.
- 2.1A Super Quick Charge, double the charging speed.
- Charge your device and get sync charged.
- Super Charge, Little waste 85% Convention Rate.





Infinity

Portable Power Bank

SPECIFICATIONS

- Cell type: Lithium-ion
- Capacity: 10000mAh to 15000mAh
- Input: DC 5V/ 2A
- Output 1: DC 5V/ 1A
- Output 2: DC 5V/ 2A
- Size: 139×65×23mm
- Net weight: 290g

FEATURES

- Charge battery capacity: 10000mAh to 15000mAh
- Charge cycles: 500 cycles after the power is still up to 85%
- When your device is being charged, the Powerseed button lights will flash. When charging the Powerseed, the button lights will illuminate sequentially. When charging is complete, the lights will illuminate constantly.



Large capacity



Charge your devices anywhere !

Tank Plus

Portable Power Bank

SPECIFICATIONS

- Type: Normal charger
 - Cell type: Lithium-ion
 - Input: DC 5V/2A
 - Output: DC 5V/1A, 5V/2.1A
 - Size: 172x61x22mm
 - Net weight: 360g
- Type: USB - C charger
 - Cell type: Lithium-ion
 - Input: DC 5V/2A
 - Output: DC 5V/3.1A
 - Size: 172x61x22mm
 - Net weight: 360g
- Type: QC Fast charger
 - Cell type: Lithium-ion
 - Input: DC 5V/2A, 9V/2A
 - Output 1: DC 5V/1A
 - Output 2: DC 5V/2.1A, 9V/2A, 12V/1.5A
 - Size: 172x61x22mm
 - Net weight: 360g

FEATURES

- Battery capacity: 12000mAh to 20400mAh
- Charge cycles: 500 cycles after the power is still up to 85%
- Ergonomic patented design, aluminum shell with 220 fine sand-sprayed finish, looks very high and glossy
- There is backlight board underneath the acrylic strap which can illuminating the logo engraved on it, looks fantastic





Butterfly

Qi 1.2 wireless charging

SPECIFICATIONS

- Cell type: Lithium polymer
- Capacity: 7000mAh
- Input: DC 5V/2A
- Wireless Charging: DC 5V/1A
- Cable Charging: DC 5V/2.1A
- Size: 157x74x16mm
- Net weight: 230g

FEATURES

- Charge cycles: the capacity retention rate remains more than 85% after 500 cycles
- Press and hold the power button for 3 seconds to enter wireless charging mode - Red Led light: On
- Press and hold the power button for 3 seconds again to exit wireless charging mode - Red Led light: Off
- Remark: be able to charge the external device wirelessly or through the cable simultaneously



A close-up photograph of a person's hands connecting a red and black Powerseed jump starter to a car's battery. The car's hood is open, revealing the engine compartment. The jump starter is a black rectangular device with a red horizontal stripe and the brand name 'Powerseed' printed on it. Red and black cables with clamps are attached to the battery terminals. The background shows green foliage.

Powerseed

#Jump Starter



Miniboost

Jump Starter

SPECIFICATIONS

- Capacity: 6000mAh
- Cell type: High-power Type Lithium-ion
- Input: 5V/ 2A DC
- Output: 5V/ 2A DC
- Output Port: 12V/ 200-300A(Peak Current)
- Size: 139x78x17mm
- Net weight: 230g

FEATURES

- Starting recreational vehicles, boats, cars, other mobile device.
- The smallest and lightest portable multi-function jump starter with patented technology in the current market.
- Multiple safety protection design ensure jump starter zero defect.
- Lighting, SOS signal, warning, and danger light.



Large capacity



Charge your devices anywhere !

Buffalo

Jump Starter

SPECIFICATIONS

- Capacity: 8000mAh
- Cell type: High-power Type Lithium-ion
- Input: 14V/1A DC
- USB Output 1: 5V/2.1A DC
- USB Output 2: 5V/2.1A DC
- Output Port : 12V/400A(Peak Current)
- Size: 172x70x23mm
- Net weight: 320g

FEATURES

- Starting recreational vehicles, boats, cars, and can charge most tablets, mobile devices.
A multi-function product for all.
- Multiple safety protection design ensure jump starter zero defect.
- Lighting, SOS signal, warning, and danger light.
- Fine rubberized fire-proof case





Lightning plus

Jump Starter

SPECIFICATIONS

- Capacity: 13000mAh
- Cell type: High-power Type Lithium-ion
- Input: 14V/ 1A DC
- USB Output: 5V/ 2.1A DC
- Output 1: 12V/ 3A DC
- Output 2: 19V/ 3.5A DC
- Output Port: 12V/ 500A(Peak Current)
- Size: 183x82x37mm
- Net weight: 580g

FEATURES

- Charge battery with a capacity of 13000mAh.
- Starting recreational vehicles, boats, cars, and can charge most laptops, mobile devices. A multi-function product for all.
- Unique design by Italian FIAT , patented technology.
- Multiple safety protection design ensure jump starter zero defect.
- Lighting, SOS signal, warning, and danger light.



Powerseed





Drum

USB Car Charger

SPECIFICATIONS

- Input voltage: DC 12 - 24V
- Output 1: 5V/1.0A
- Output 2: 5V/2.1A
- Size: 76×36×20mm
- Net weight: 17g

FEATURES

- Full protection against overcharge, short-circuit, over current and overload Non-flammable housing.
- With backlight, which can enhance the logo effect.
- Fast charging.





Universe

SPECIFICATIONS

- Normal car charger
- Input voltage: DC 12 - 24V
- Output 1: 5V/1A
- Output 2: 5V/2.1A
- Size: 71.5×33.5×33.5mm

- QC Fast Car Charger
- Input voltage: DC 12 - 24V
- Output 1: 5V/1A
- Output 2: 5V/2A, 9V/2A, 12V/1.5A
- Size: 71.5×33.5×33.5mm

FEATURES

- 2 USB charging ports, the single port maximum current output reaches 2.1A.
- It supports 12-24V DC input, compatible with the mainstream Android cell phone, iphone and panel computer.





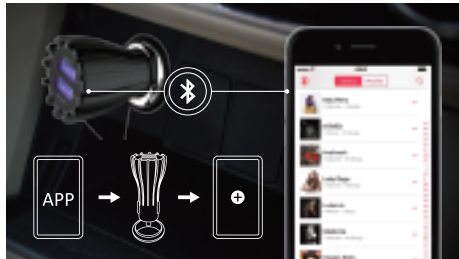
Universe

SPECIFICATIONS

- Bluetooth 4.0
- Support Android & IOS system
- Input voltage: DC 12 - 24V
- Output 1: 5V/ 1A
- Output 2: 5V/ 2.1A
- Size: 71.5×33.5×33.5mm

Operation guide:

Simply, Insert the charger in to the socket of the cigarette lighter, then proceed as follows, connect the charger to your mobile through Bluetooth, then set the FM frequency in the specific App installed on your mobile, finally, match your car FM radio frequency to the frequency you set, now you can play the music on your phone through the car FM radio.



Scan QR code to download APP for Android mobile





TWISTER

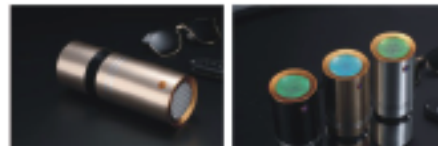
Car air purifier

SPECIFICATIONS

- Product size: Φ 65.5×180mm
- Rated voltage: DC 12V car cigarette lighter
- Maximum power: 6W
- Negative ion concentration: Greater than 15million pcs/cm³
- PM2.5 removal rate: 99.84% methanal removal rate: 91.1%
- Maximum air flow rate: 15m³/h
- Noise: ≤32dBA
- Weight: 325g

FEATURES

- Dedicated for cars
- Purification technology: filter net + negative ions
- The negative ion concentration is greater than 15 million psc/cm³
- Dust removal, methanal removal, sterilization, overcome carsickness, reduce driving fatigue
- Colorful LED indication
- Three layer filter: cold catalyst+ activated carbon +HEPA





TOWER

Car air purifier and deodorizer

SPECIFICATIONS

- Rated voltage: DC12V car cigarette lighter
- Maximum power: <12W
- The concentration of negative ions: 5 million pcs/cm³
- PM2.5 removal rate: 96%
- Size: high 173mm, diameter 65mm
- Noise: <20dBA

FEATURES

- Aluminum alloy body, vertical air duct
- Can be used in the car and home
- Negative ion function, no consumable material
- iRemoval of second-hand smoke, PM2.5 substance, harmful gases
- Touch power switch
- 5V 2.1A dual USB output



PUREAIR

Car deodorizer

SPECIFICATIONS

- Applicable area: 0.5—3m³
- Working principle: ozone sterilization and odor removal
- Battery capacity : 500mAh
- Endurance time: Around 10 days
- Power supply: USB charging
- Product size: 84×87×29mm
- Package size: 96×92×35mm
- NW: 85g
- GW: 107g

FEATURES

- Suitable for refrigerator, wardrobe, and other small space
- Rapid removal of flavor, strong sterilization, food preservation, pesticide residues
- Sterilization rate as high as 99.9%
- Using intelligent control technology, automatic interval operation
- Built in lithium battery, rechargeable, no need to replace consumptive material
- Compact and convenient, easy to place



HD-35

Car Mount Holder

FEATURES

- Compatible with 3.0 - 6.0 inch smartphone
- Suction cup with Gel-pad conveniently attaches to dashboard, windshield or any other smooth surface and easily removable
- 360° adjustable angel gives you a best viewing angle
- Easy and simple installation



HD-109

Car Mount Holder

FEATURES

- Compatible with 3.0 - 6.0 inch smartphone
- Suction cup with Gel-pad conveniently attaches to dashboard, windshield or any other smooth surface and easily removable
- 360° adjustable angle gives you a best viewing angle
- Easy and simple installation





HD-79

Magnetic Car Vent Holder

FEATURES

- Strong magnetic force, hold your phone steadily
- One hand operation
- 360° degree rotatable and tiltable, you can adjust your phone to any position you want
- Easy and simple installation

Mounting instructions

A: Use with Rectangle Metal plate

- 1: Put the metal plate between your phone and phone case, charge face to the back of the phone.
- 2: Attache your phone to the magnetic mount

B: Use with Round Metal Plate with Gel Pad

1. Peel off the transparent protective film from round metal plate
2. Stick the metal plate with gel pad on the back of the phone at center position.
3. Snap the round metal plate on the magnetic mount

