

INTEGRAL DENTAL UNIT

0673 MODEL



CE 0598

0673 Model



STANDARD EQUIPMENT & FEATURES

- ◆24V noiseless DC motor
- ◆Optional switch purified water & tap water system (1 set)
- ◆Automatic constant-temperature water supply system (1 set)
- ◆Cold/hot water system
- ◆Auto adjustable cup filler equipment (1 set)
- ◆Auto spittoon flush control system (1 set)
- ◆Integral deluxe ceramic spittoon (1 set)
- ◆Auto water-pressure saliva ejector (1 set)
- ◆Auto high sucker (1 set)
- ◆External water tank (1 set)
- ◆3-way syringe(air/water/fine spray) (2 sets)
- ◆24V low-voltage film viewer (1 set)
- ◆All- direction cold light lamp (1 set)
- ◆Down-hang instrument tray
- ◆Instrument tray with air brake
- ◆Rotable side box
- ◆Pedal foot control switch (1 set)
- ◆Deluxe chair for dentist (1 set)
- ◆4 holes handpiece pipe (3 sets)

SPECIFICATIONS

Power : 110V/220V 50/60Hz 4A
Air Pressure : >0.55MPa(clean oilless dry)
Water Pressure : 0.2MPa~0.4MPa

OPTIONAL ACCESSORIES

4-hole high-speed turbine handpiece imported /domestic product (2 pieces)
4-hole low-speed turbine handpiece imported /domestic product (1 piece)
Ultrasonic scaler imported /domestic product (1 piece)
Curing light imported /domestic product (1 piece)
Oral camera imported /domestic product (1 set)
Fiber optic handpiece
Fiber optic handpiece circuit board
Fiber optic handpiece tube



Integral dental unit 1021 Model



CE 0598

1021 Model



STANDARD EQUIPMENT & FEATURES

- ◆24V noiseless DC motor
- ◆Three-memory position preset (1 set)
- ◆Auto light on at three-memory position
- ◆Auto light off when reset
- ◆Auto water supply & spittoon flush system at "spit position"
- ◆Auto safety protection system in working (inter-locking feature)
- ◆Auto exhaust system for remained water and air in tubes (when power off)
- ◆Water & electricity separated design
- ◆Deluxe chair for dentist (1 set)
- ◆Optional switch purified water & tap water system (1 set)
- ◆Automatic constant-temperature water supply system (1 set)
- ◆Cold/hot water system
- ◆Auto adjustable cup filler equipment (1 set)
- ◆Auto spittoon flush control system (1 set)
- ◆Deluxe integrated rotatable ceramic spittoon (1 set)
- ◆Deluxe adjustable water-pressure saliva ejector (1 set)
- ◆Deluxe adjustable high suction (1 set)
- ◆External water tank (1 set)
- ◆3-way syringe(air/water/fine spray) (2 sets)
- ◆24V low-voltage film viewer (1 set)
- ◆Deluxe sensor light (1 pieces)
- ◆Down-hang instrument tray (1 set)
- ◆Instrument tray with air brake
- ◆Cotton cup (1 set)
- ◆Multifunctional pedal foot switch system
- ◆Rotatable side box

SPECIFICATIONS

- ◆Power : 110/220V 50/60 Hz 10A
- ◆Air pressure : >0.55MPa(clean oilless dry)
- ◆Water pressure : 0.2MPa~0.4MPa

OPTIONAL ACCESSORIES

- ◆4-hole high-speed turbine handpiece. imported /domestic product (2 pieces)
- ◆4-hole low-speed turbine handpiece. imported /domestic product (1 piece)
- ◆Ultrasonic scaler. imported /domestic product (1 piece)
- ◆Curing light. imported /domestic product (1 piece)
- ◆Oral camera. imported /domestic product (1 set)
- ◆Up-hang instrument tray (1 set)
- ◆Fiber optic handpiece
- ◆Fiber optic handpiece circuit board
- ◆Fiber optic handpiece tube



Integral dental unit

0926A Model

It is designed and produced according to Ergonomic principles. With all PU molding, you will find it softer, more comfortable and durable. Moreover, all of our products comply closely with modern aesthetic concept and have got great reputation all over the world. Now our sale networks have expanded to Europe and the United States, Arab, Canada, Australia and other parts of the world.



拥有百家，誉满天下
Global growing together with FUJIA



CE 0598



0926A Model



STANDARD EQUIPMENT & FEATURES

- ◆24V noiseless DC motor
- ◆Optional switch purified water & tap water system (1 set)
- ◆Automatic constant-temperature water supply system (1 set)
- ◆Cold/hot water system
- ◆Auto adjustable cup filler equipment (1 set)
- ◆Auto spittoon flush control system (1 set)
- ◆Deluxe integrated rotatable ceramic spittoon (1 set)
- ◆Deluxe adjustable water-pressure saliva ejector (1 set)
- ◆Deluxe adjustable high suction (1 set)
- ◆External water tank (1 set)
- ◆3-way syringe(air/water/fine spray) (2 sets)
- ◆24V low-voltage film viewer (1 set)
- ◆Deluxe LED sensor light (1 piece)

SPECIFICATIONS

- ◆Power: 110V/220V 50/60Hz 10A
- ◆Air pressure: >0.55Mpa(clean oilless dry)
- ◆Water pressure: 0.2Mpa~0.4Mpa

OPTIONAL ACCESSORIES

- ◆4-hole high-speed turbine handpiece. imported /domestic product (2 pieces)
- ◆4-hole low-speed turbine handpiece. imported /domestic product (1 piece)
- ◆Ultrasonic scaler. imported /domestic product (1 piece)
- ◆Curing light .imported /domestic product (1 piece)
- ◆Oral camera .imported /domestic product (1 set)
- ◆Up-hang instrument tray (1 set)
- ◆Fiber optic handpiece
- ◆Fiber optic handpiece circuit board
- ◆Fiber optic handpiece tube



- ◆Down-hang instrument tray (1 set)
- ◆Instrument tray with air brake
- ◆Cotton cup (1 set)
- ◆Multifunction switch system
- ◆Three-memory position preset (1 set)
- ◆Auto light on at three-memory position
- ◆Auto light off when reset
- ◆Auto water supply & spittoon flush system at "spit position"
- ◆Auto safety protection system in working (inter-locking feature)
- ◆Auto exhaust system for remained water and air in tubes (when power off)
- ◆Water & electricity separated design
- ◆Deluxe chair for dentist (1 set)
- ◆Rotatable side box

Integral dental unit 0838 Model



CE 0598

Integral dental unit 0838 Model



SPECIFICATIONS

- ◆Power : 110V/220V 50/60Hz 10A
- ◆Air pressure : >0.55MPa(clean oilless dry)
- ◆Water pressure : 0.2MPa~0.4MPa

OPTIONAL ACCESSORIES

- ◆4-hole high-speed turbine handpiece, imported /domestic product (2 pieces)
- ◆4-hole low-speed turbine handpiece, imported /domestic product (1 piece)
- ◆Ultrasonic scaler, imported /domestic product (1 piece)
- ◆Curing light, imported /domestic product (1 piece)
- ◆Oral camera, imported /domestic product (1 piece)
- ◆Up-hang instrument tray (1 set)
- ◆Fiber optic handpiece
- ◆Fiber optic handpiece circuit board
- ◆Fiber optic handpiece tube



STANDARD EQUIPMENT & FEATURES

- ◆Stable Hydraulic system
- ◆Three-memory position preset (1 set)
- ◆Auto light on at three-memory position
- ◆Auto light off when reset
- ◆Auto water supply & spittoon flush system at "spit position"
- ◆Operation system with LED display
- ◆Auto sterilize system
- ◆Auto safety protection system in working (inter-locking feature)
- ◆Auto exhaust system for remained water and air in tubes(when power off)
- ◆Water & electricity separated design
- ◆Rotatable side box
- ◆Automatic compensating system
- ◆Optional switch purified water & tap water system (1 set)
- ◆Automatic constant-temperature water supply system (1 set)
- ◆Cold/hot water system
- ◆Auto adjustable cup filler equipment (1 set)

- ◆Instrument tray with air brake (1 set)
- ◆Multifunctional pedal foot switch system
- ◆Auto spittoon flush control system (1 set)
- ◆Deluxe integrated rotatable ceramic spittoon (1 set)
- ◆Deluxe adjustable water-pressure saliva ejector (1 set)
- ◆Deluxe adjustable high suction (1 set)
- ◆Built-in water tank (1 set)
- ◆Built-in disinfection tank
- ◆3-way syringe(air/water/fine spray) (2 sets)
- ◆All-direction rotatable panoramic-view film viewer (1 set)
- ◆Deluxe LED sensor light (1 set)
- ◆Down-hang instrument tray (1 set)
- ◆Deluxe chair for dentist (1 set)
- ◆Deluxe chair for assistant (1 set)

Integral dental unit
0838A Model



CE 0598

0838A Model

STANDARD EQUIPMENT & FEATURES

- ◆Digital control system
- ◆Stable hydraulic system
- ◆Water & electricity separated design
- ◆Automatic compensation system
- ◆Feather-touch control panel
- ◆Easy purified water & tap water switching system
- ◆Intelligent linkage system (chair positions link with mouth lamp, water supply & rinse)
- ◆Auto exhaust system for remained water & air in tubes (when power off)
- ◆Digital-control Touch LED screen
- ◆Power adjustable system for handpieces and scaler
- ◆Instrument tray with feather-touch air brake system
- ◆Working instruments auto safe protection system (inter-locking feature)
- ◆Three separated programs (for three dentists)
- ◆Electronic timing control system (buzzer sounds indicate)
- ◆English and Chinese operation systems
- ◆Adjustable brushed motor systems (direction and torque adjustable)
- ◆Auto light on at emergency position
- ◆Calendar & time automatic update system
- ◆Deluxe LED sensor light
- ◆Auto light off when reset
- ◆Rotatable side box
- ◆Cold/hot water system
- ◆Deluxe adjustable high & low suction(high suction power-off delay) (1 Set)
- ◆Built-in water tank (1 Piece)
- ◆3-way syringe(air/water/fine spray) (2 Sets)
- ◆All-direction rotatable and adjustable panoramic film viewer (1 Piece)
- ◆Down-hang instrument tray (1 Set)
- ◆Deluxe chair for dentist (1 Set)
- ◆Deluxe chair for assistant (1 Set)
- ◆Humanization multifunction foot controller
- ◆Back and seat prevent press protection system



OPTIONAL ACCESSORIES

- ◆4-hole high-speed turbine handpiece (imported /domestic product) (2 Pieces)
- ◆4-hole low-speed turbine handpiece (imported /domestic product) (1 Piece)
- ◆Ultrasonic scaler (imported /domestic product) (1 Set)
- ◆Curing light (imported /domestic product) (1 Set)
- ◆Oral camera (imported /domestic product) (1 Set)
- ◆Up-hang instrument tray (1 Set)
- ◆Fiber optic handpiece
- ◆Imported Brushed motor handpiece
- ◆Imported Brushless motor handpiece
- ◆Imported Brushless motor circuit board (Can connect with root canal apex locator)

SPECIFICATIONS

- ◆Power : 110/220V 50/60Hz 10A
- ◆Air pressure : >0.55MPa(clean oilless dry)
- ◆Water pressure : 0.2MPa ~ 0.4MPa

OIL FREE AIR COMPRESSORS



128

TECHNICAL PARAMETERS

Voltage: 220V
Power: 550W
Frequency: 50Hz
Traffic: 73L/min
Noise: 50-58Db
Speed: 1400r/min
Volume: 30L
Maximum pressure: 0.8MPa
Start-up pressure: 0.5MPa
NW: 23.5Kg
Size : 44×44×66cm



228

TECHNICAL PARAMETERS

Voltage: 220V
Power: 850W
Frequency: 50Hz
Traffic: 100L/min
Noise: 53-60Db
Speed: 1400r/min
Volume: 35L
Maximum pressure: 0.8MPa
Start-up pressure: 0.5MPa
NW: 26Kg
Size : 44×44×72cm





228 WITH FILTER TECHNICAL PARAMETERS

Voltage: 220V
Power: 850W
Frequency: 50Hz
Traffic: 100L/min
Noise: 53-60Db
Speed: 1400r/min
Volume: 35L
Maximum pressure: 0.8MPa
Start-up pressure: 0.5MPa
NW: 26Kg
Size : 44×44×72cm



328 TECHNICAL PARAMETERS

Voltage: 220V
Power: 550W×2
Frequency: 50Hz
Traffic: 145L/min
Noise: 55-60Db
Speed: 1400r/min
Volume: 65L
Maximum pressure: 0.8MPa
Start-up pressure: 0.5MPa
NW: 47Kg
Size : 85.5×44×70cm



OIL FREE AIR COMPRESSORS



428

TECHNICAL PARAMETERS

Voltage: 220V
Power: 850W×2
Frequency: 50Hz
Traffic: 210L/min
Noise: 55-60Db
Speed: 1400r/min
Volume: 65L
Maximum pressure: 0.8MPa
Start-up pressure: 0.5MPa
NW: 52Kg
Size : 85.5×44×70cm



528

TECHNICAL PARAMETERS

Voltage: 220V
Power: 550W×3
Frequency: 50Hz
Traffic: 300L/min
Noise: 55-60Db
Speed: 1400r/min
Volume: 135L
Maximum pressure: 0.8MPa
Start-up pressure: 0.5MPa
NW: 73.5Kg
Size : 106×45×73cm





628

TECHNICAL PARAMETERS

Voltage: 220V
Power: 850W×3
Frequency: 50Hz
Traffic: 380L/min
Noise: 55-60Db
Speed: 1400r/min
Volume: 135L
Maximum pressure: 0.8MPa
Start-up pressure: 0.5MPa
NW: 81Kg
Size : 106×45×76cm



1028

TECHNICAL PARAMETERS

Voltage: 220V
Power: 850W×5
Frequency: 50Hz
Traffic: 560L/min
Noise: 60-70Db
Speed: 1400r/min
Volume: 180L
Maximum pressure: 0.8MPa
Start-up pressure: 0.5MPa
NW: 121Kg
Size : 145×45×83cm



PRODUCT FITTINGS SERIES



Deluxe dentist chair



Dentist chair



Dentist chair



Deluxe hand made cotton dentist chair



Deluxe multifunton pedal foot control switch



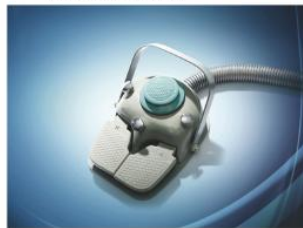
Portable turbing unit



Down-hang instrument tray



Up-hang insurment tray



Multifunton pedal foot control switch



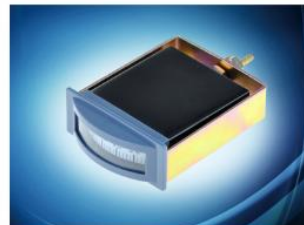
Single pressurized -water valve



Floor box system



Round air pressure meter



Square air -pressure meter



Transformer



Second normally close valve



Curing light



Cold light lamp



Pile-up valve



Second normally open valve



Pressure regulating valve



Water filter



High suction valve



Low suction valve



4-hole foot controller



Single rack box



Triple membrane valve



Dental turbine unit-1



Dental turbine unit-2



Dental turbine unit-3



Deluxe adjustable high suction



Deluxe adjustable low suction



Adjustable low suction



Backup water tank joint



Single direction valve



Adjustable high suction



Water supply tube 1



Water supply tube 2



High suction



Film viewer



Anti-water backflow valve



Low suction



Four membrane valve



Main air supply switch



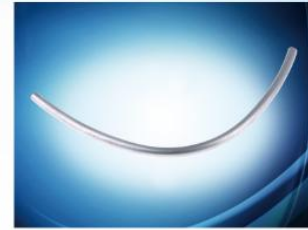
Heater



Chair control switch



Normally close valve



Anti-pressure outlet pipe



Water and air regulator



Water supply switch



Racking normally open valve



Rinsing tube-1



Rinsing tube-2



Rinsing tube



24v electromagnetic valve



Fiber optic handpiece circuit board



Safe valve



Handpiece repair tools



Vertical pressure switch



Connecting rod

PRODUCT FITTINGS SERIES



Piston cup



Euro power cable



Horizontal pressure switch



550W Compressor motor



850W Compressor motor



1200W Compressor motor



300W Compressor motor



550W Electrophoresis compressor motor



850W Electrophoresis compressor motor



LED sensor light



Deluxe LED sensor light



Deluxe LED sensor light-2



Suction unit FJ-V200



Salver



Deluxe dental stool 1



Deluxe dental stool 2



Deluxe dental stool 3

COLOR CODE



Grass Green



Apple Green



Yellow



Orange



Emerald



Dark blue



Gray



Light orange